

# **No. 75      Format for Electronic Exchange of Class and Statutory Data**

(June  
2001)  
(Rev.1  
Feb 2015  
Complete  
revision)  
(Corr.1  
Feb 2016)  
(Rev.2  
Dec 2016)  
(Rev.3  
Jan 2020)  
(Corr.1  
Oct 2020)

**Abstract:**

This document details “Unified Data Exchange Format (UDEF)” for electronic exchange of class and statutory data between IACS Member Societies and Flag States.

**No.  
75**  
(cont)**Table of Content**

<b>Format for Electronic Exchange of Class and Statutory Data</b> .....	1
1. Electronic Access to Class and Statutory Data .....	3
<b>1.1. Introduction</b> .....	3
<b>1.2. Electronic exchange</b> .....	3
<b>1.3. Data Formats</b> .....	3
<b>1.4. Security</b> .....	4
<b>1.5. Reporting of Maritime Management System (MMS) information</b> .....	4
2. Electronic Exchange.....	4
<b>2.1. Introduction</b> .....	4
<b>2.2. Operation</b> .....	5
<b>2.3. Data collection and processing</b> .....	15
<b>2.4. Special restrictions and comments</b> .....	15
<b>2.5. References</b> .....	16
3. Technical Solution .....	17
4. Change management and governance .....	17
APPENDIX .....	19

## **1. Electronic Access to Class and Statutory Data**

### **1.1. Introduction**

1.1.1 This document details the data requirements that have been developed to facilitate the exchange of class and statutory data by IACS Member Societies with flag state administrations.

Data definitions and data fields for the electronic exchange of data are detailed. The mechanism of exchange is explained below.

### **1.2. Electronic exchange**

1.2.1 Societies shall not provide printed information except by special cases. It is the responsibility of individual flag state administrations to access the information and produce any relevant reports based on the data collected.

1.2.2 Access to the information shall be at the discretion of the individual society. Each society is invited to develop and run at its server the converting software to make the society's data compatible with the data format as described below.

1.2.3 This implementation of Unified Data Exchange Format (UDEF) will make data from all societies available and harmonized for further processing and allow arrangement of single window reporting, were any end user may collect complete and reliable data.

1.2.4 Usage of aggregating server software, based at any/some/all Member's server(s) or at IACS server, or specially designed application software installed at the end user's computer may provide flag states or other organizations with the complete data in single report irrelatively of a number of IACS Members performing activities on behalf of the flag state.

1.2.5 The advantages UDEF may encourage IACS Members to facilitate processes of data supply for flag states and stimulate IACS for further integration of "Single window" reporting in the IMO RO Code.

1.2.6 For the purposes of electronic exchange of data with flag state the anticipated means of exchange will be by XML files via web service. The formats of data are shown in the relevant section of the document.

1.2.7 As a temporary measure the XML file may be generated by IACS Members and sent by e-mail/ftp on single or regularly bases to flag state(s). Frequency is the subject of bilateral agreement with flag state(s).

1.2.8 The e-mail/ftp must be secured in the proper way against any misuses or fraud acts.

1.2.9 Other means of data/file formats should be investigated as technology improves, although each organization may implement its own technology.

### **1.3. Data Formats**

1.3.1 Dates exchanged shall be in the form of yyyy-mm-dd, as defined by ISO 8601.

**No.  
75**  
(cont)

1.3.2 Country codes shall be as defined by ISO 3166-1 alpha-3.

1.3.3 Locations codes shall be as defined by UNECE,

see <http://www.unece.org/cefact/locode/service/location.html>

If the UNECE code is not suitable, this may be substituted by an appropriate free text.

1.3.4 All numeric data exchanged shall be used without thousand separator.

1.3.5 Special characters used by individual societies, e.g. in class notations, which are not present in the standard character sets are to be substituted by an appropriate alternative character(s) as deemed appropriate by the individual society concerned.

#### **1.4. Security**

1.4.1 The data shall be protected. Any user or aggregation software must be properly validated with appropriate access granted.

#### **1.5. Reporting of Maritime Management System (MMS) information**

1.5.1 MMS covers ISM, ISPS and MLC. Administrations should be aware that MMS reporting from a single Member may not be complete.

### **2. Electronic Exchange**

#### **2.1. Introduction**

2.1.1 This document does not affect internal data processing of any IACS Member and does not specify the means of exchange or requirements for server, user or aggregation software.

2.1.2 For the UDEF implementation IACS Member are invited to develop and run at their server specific software for translating external requests and returning the selected data from their databases to the initiators of requests.

## 2.2. Operation

2.2.1 The external requests must operate only with the data fields named in the Table 1. The scope of data may vary on flag state's requests, but not exceed the data fields named in the Table 1.

Column "Mandatory" in Table 1 will identify the data to be included for the RO issuing the file; column "Mandatory" is filled in Table 1 with the following codes:

- Y = Mandatory data
- N = Non Mandatory data
- C = Mandatory for ships classed by the reporting RO

2.2.2 The GENERAL\_DATA fields contain information about the organization making the data available, and the data protocol release being referred to.

2.2.3 The SHIPS\_DATA fields contain information describe a ship.

2.2.4 The CERTIFICATES\_DATA fields contain information about the certificates that have been issued for the ship or company by the recognised organization and not withdrawn or withdrawn in the last 2 months.

One ship may have many certificates.

One company may have many certificates.

2.2.5 The SURVEY\_AUDIT\_DATA fields contain the information identifying surveys and audits carried out on ships and companies.

One certificate may have many surveys/audits.

2.2.6 The FINDING\_COMMENT\_DATA fields contain information describing the findings and comments given to a ship or company.

One ship may have many comments.

One company may have many comments.

2.2.7 The MMS\_COMPANY\_DATA fields contain information describing a Ship management company.

2.2.8 Important note: Data could contain a record for a company without containing a record for a ship, e.g. where ship is classed by a different society and also the ISM-VE certificate is issued by a different society.

**No.  
75**  
(cont)

TABLE 1					
Field	Mandatory	Type	Format / Max field size	Options	Description
<b>GENERAL_DATA</b>					
RO	Y	Text	20	See Appendix 1 Table A1	Identification of the recognised organisation making the data available.
Date	Y	Date	yyyy-mm-dd		Export date
Release	Y	Number	i,j		i: Release number of Rec.75 j: Release number of Appendix, starting at 1 for each i.
<b>SHIP_DATA</b>					
SHIP_Name	Y	Text	40		
SHIP_Build_Date	C	Date	yyyy-mm-dd		
SHIP_Keel_Laid_Date	C	Date	yyyy-mm-dd		
SHIP_Class_Entry_Date	C	Date	yyyy-mm-dd		Date of entry into class of the RO.
SHIP_IMO_Number	N	Text	7		
SHIP_Administration_Type	Y	Selection single	1	C	Civilian
				N	Naval
				O	Other
				X	None
				U	Unknown
SHIP_Administration_Country	N	Selection single	3	ISO 3166-1 alpha-3	
SHIP_Classified_By	C	Text	20	See Appendix Table A1	Identification of the classification society currently having the ship in class.
SHIP_Class_Number	C	Text	8		The classification society's identification of the ship.

**No.  
75**  
(cont)

Field	Mandatory	Type	Format / Max field size	Options	Description
SHIP_Port_Of_Registry	N	Text	50	UNECE	-
SHIP_Date_Of_Registry	N	Date	yyyy-mm-dd		Date of registration at the Administration.
SHIP_Registry_Number	N	Number	20		Number of registration in the Port Registry.
SHIP_Call_Sign	N	Text	10		
SHIP_Type_IACS	Y	Selection single	2	See Appendix Table A2	
SHIP_Type_Other	N	Text	50		Description of SHIP_Type_IACS = ZZ
SHIP_Class_Status	C	Selection single	1	V	Class valid
				S	Class suspended
				W	Class withdrawn
SHIP_Ship_Status	C	Selection single	1	E	In service
				L	Laid up
				P	Lost from RO's class
SHIP_Class_Notation	C	Text	500		Class notation assigned by the RO.
SHIP_Gross_Tons	C	Number	9,2		Format: 9999999,99 GT as defined in the International Convention on Tonnage Measurements of Ships of 1969 or tons for National Tonnage.
SHIP_Deadweight	N	Number	7		In tonnes, as required for gas, oil and chemical tankers.
SHIP_Registered_Owner	C	Text	250		Official name of the ship owner according to the Certificate of Registry and published on the Register Book.

**No.  
75**  
(cont)

Field	Mandatory	Type	Format / Max field size	Options	Description
SHIP_Type_MMS	N	Selection multiple	8	See Appendix Table A3	
SHIP_ISM_Shipowner_IMO	N	Text	7		IMO company number as stated in the ship's ISM certificate.
SHIP_ISM_Shipowner	N	Text	80		Name of the company as stated in the ship's ISM certificate.
SHIP_MLC_Shipowner_ID	N	Text	8		The unique identifier assigned by the classification society to identify the shipowner as defined in MLC 2006 Article II.
SHIP_MLC_Shipowner	N	Text	80		MLC owner name
<b>CERTIFICATE_DATA</b>					
CERTIFICATE_ID	Y	Text	20		The identification of the certificate defined by the issuing organization.
CERTIFICATE_Status	Y	Selection single	1	V	Valid
				S	Suspended
				W	Withdrawn



**No.  
75**  
(cont)

Field	Mandatory	Type	Format / Max field size	Options	Description
CERTIFICATE_Remark	Y	Text	2		00 - means the certificate is alone of this type. Ux - means that there are several certificates of the same type, one active and the others sealed-up; "x" is an integer number between 1 and 9 that identify the sets of the certificates (U1... U9). All certificates of the same set shall have the same code (e.g. U5 of LL must be also marked U5 for TM, OPP, etc.)
CERTIFICATE_Issued_By	Y	Text	20	See Appendix Table A1	Identification of the organization which issued the certificate.
CERTIFICATE_Code	Y	Selection single	10	See Appendix Table A4	
CERTIFICATE_Validity_Type	Y	Selection single	1	F	Full term issue
				I	Interim/unconditional issue
				S	Short term (a certificate valid for a maximum period of 5 months, issued in order to bridge the time until the full term certificate is received on board).
				C	Conditional (certificate issued when deficiencies exist and it is valid for a period only long enough to permit the ship to proceed to the port where the deficiencies can be rectified)

**No.  
75**  
(cont)

Field	Mandatory	Type	Format / Max field size	Options	Description
CERTIFICATE_Category	Y	Selection single	3	IC	Use when: a. the regulation is an international convention or mandatory referenced code, and b. the regulation has entered into force, and c. the regulation is ratified by the Administration, and d. the regulation applies to the vessel/company, and e. the Administration has authorised the issuing organization to issue the certificate.
				C	Use when: a. the Administration has authorized the issuing organization to issue the certificate, and b. not all conditions a - d for IC are met.
				SoC	Use when: a. the flag state has not authorised the issuing organisation to issue the certificate
Correspondance between Certificate Categories used in Rev 2 with Certificate Categories used in Rev 3 is : S (Rev 2) => IC (Rev 3) D, N (Rev 2) => C (Rev 3) C, F, V (Rev 2) => SoC (Rev 3)					
CERTIFICATE_Description	N	Text	120		Further description of the certificate, required if the CERTIFICATE_Code = OTHER. Note : a selection of certificates shall be reported by the RO, based on the scope of work of the RO and the agreement between the RO and the Flag State
CERTIFICATE_Issue_Date	Y	Date	yyyy-mm-dd		
CERTIFICATE_Expiry_Date	N	Date	yyyy-mm-dd		

No.  
75

(cont)

Field	Mandatory	Type	Format / Max field size	Options	Description
MLC_Declaration_Date	N	Date	yyyy-mm-dd		
MLC_Declaration_Place	N	Text	50	UNECE	
COMPANY_CERTIFICATE_Administration	N	Selection single	3	ISO 3166-1 alpha-3	A company may be authorized to manage ships of a certain type by one or more flag administrations.
COMPANY_CERTIFICATE_Ship_Types	N	Selection multiple	30	See Appendix Table A3	COMPANY_CERTIFICATE_Ship_Types must be separated by comma
<b>SURVEY_AUDIT_DATA</b>					
SURVEY_AUDIT_Code	Y	Text	10	See Appendix Tables A4 and A6	For statutory surveys/audits, use the CERTIFICATE_Code in as per Appendix Table A4 For class surveys use the survey code as per Appendix Table A6 For bottom surveys, use BOT. For other class surveys, use the coding of the ship's classification society.
SURVEY_AUDIT_Type	N	Selection single	2	See Appendix 1 Table A5	
SURVEY_AUDIT_Description	Y	Text	120		The class society specific description.
<b>LAST</b>					
SURVEY_AUDIT_Held_Date	Y	Date	yyyy- mm-dd		
SURVEY_AUDIT_Place_Held	Y	Text	50	UNECE	
<b>NEXT</b>					
SURVEY_AUDIT_Due_Date	N	Date	yyyy-mm-dd		
SURVEY_AUDIT_Postponement_Date	N	Date	yyyy-mm-dd		

**No.  
75**  
(cont)

Field	Mandatory	Type	Format / Max field size	Options	Description
SURVEY_AUDIT_Status	Y	Selection single	1		To be filled in only for surveys/audits not yet carried out or completed. The contents of this field may be calculated at run-time.
				D	The current date is within the survey/audit range dates.
				O	The current date is after the survey/audit range to date.
				P	The survey/audit has been started but is not yet complete.
				B	Before the survey/audit range dates.
SURVEY_AUDIT_Range_From_Date	N	Date	yyyy-mm-dd		
SURVEY_AUDIT_Range_To_Date	N	Date	yyyy-mm-dd		
<b>FINDING_COMMENT_DATA</b>					
COMMENT_Type in case a condition is linked to both class and statutory matters, the condition will need to be duplicated, 1 line with COMMENT_Type = "C" and 1 line with COMMENT_Type = "S"	Y	Selection single	1	M	Memorandum
				C	Condition of Class
				S	Statutory Condition
				N	Non-conformity
				D	Deficiency
				O	Observation
COMMENT_Certificates	N	Text	500		List of certificates, separated by comma, linked to the comment.
COMMENT_Date_Issued	Y	Date	yyyy- mm-dd		

**No.  
75**  
(cont)

Field	Mandatory	Type	Format / Max field size	Options	Description
COMMENT_Place_Issued	N	Text	50	UNECE	Location where the survey was undertaken which resulted in the imposition of the comment.
COMMENT_Due_Date	N	Date	yyyy-mm-dd		Normally used for specifying a due date, but may be linked to another survey/audit (see the field below). When both are present it means the first between (COMMENT_Due_Date and COMMENT_ExpirySurvey).
COMMENT_Expiry_Survey_Audit	N	Text	500		
COMMENT_Status	N	Text	1	A	Active: the comment is still applicable.
				P	Postponed: the comment is still applicable and the due date/expiry survey have been changed.
				O	Overdue: the comment is still applicable and is also overdue for implementation.

**No.  
75**  
(cont)

Field	Mandatory	Type	Format / Max field size	Options	Description
COMMENT_Postponed_Due_Date	N	Date	yyyy-mm-dd		Due date after the last postponement
COMMENT_Postponed_Expiry_Survey_Audit	N	Text	500		Expiry survey/audit after the last postponement
COMMENT_MMS_Reference	N	Text	20		Applicable only in case of MMS related comments. <i>Chapter/paragraph number of the applicable MMS regulation, separated by commas</i>
COMMENT_Text	Y	Text	10000		
<b>MMS_COMPANY_DATA</b>					
COMPANY_Management_ID	Y	Text	20		The unique identifier assigned by the classification society to identify the ship management company.
COMPANY_IMO_Number	N	Text	7		
COMPANY_Name	Y	Text	80		
COMPANY_Address	Y	Text	500		
COMPANY_MLC_Responsibility	N	Text	1	Y	Company takes responsibility for MLC
				N	Company does not take responsibility for MLC

# No. 75 (cont)

## 2.3. Data collection and processing

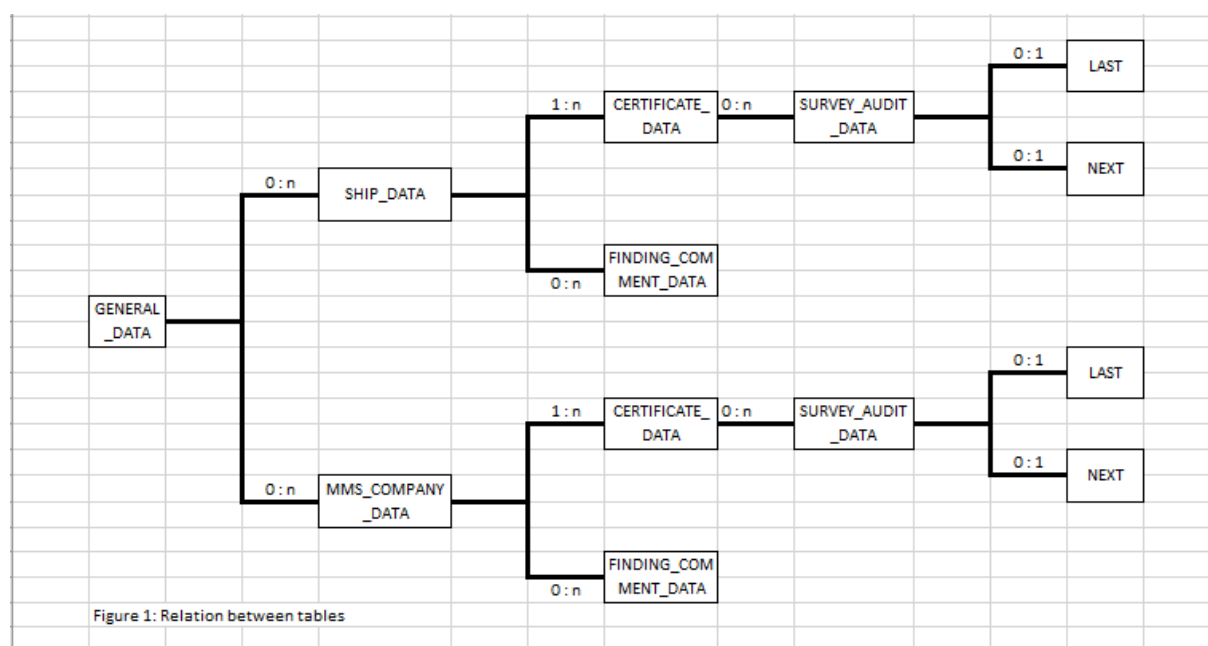
2.3.1 All data is to be placed in the XML file(s) for UDEF transmission.

2.3.2 At least two main types of data are to be formed depending on requests:

- Data table (Tier 1, this is to start testing of UDEF and to work out further development of the harmonized UDEF for the Tier 2);
- Data string (Tier 2).

2.3.3 Data table is primarily intended to facilitate data supply from each RO to flag state administration and provides general information about a number of vessels (all vessels) flying the flag and requests no aggregation of data between recognised organizations. It may start with at least only one recognised organization and one Flag state involved.

2.3.4 Figure 1 shows the interactions between the different tables and anticipates a view of the possible data organization in the XML File.



2.3.5 The tables in Figure above are described in 2.2 and specified in detail Appendix.

2.3.6 Data string is intended to supply the end user with complete data about the ship(s). The data is collected from all available sources (e.g.: Class=RO1, Statutory=RO2, ISM=RO3, MLC=RO4, e.t.c.). This may be realized effectively when the UDEF starts at least among all (or majority) of IACS members.

## 2.4. Special restrictions and comments

2.4.1 Some data (like SHIP\_Class\_Notation, SHIP\_Gross\_Tons, SHIP\_Deadweight) aggregated from different ROs may vary and should be provided by the RO where the ship is originally classed (NOT ISM, MLC e.t.c) to avoid complaints.

2.4.2 The same data shall not be repeated in the same XML file to avoid its increasing (e.g. data relevant to MMS Companies (certificates and audits) should be extracted in the XML file only once).

2.4.3 In case multiple values shall be reported for a data field, these values shall be separated by a comma.

## 2.5. References

2.5.1 Appendix 1 provides tables of references used in this document. The tables generally provide at least a code (abbreviation) and name for each item. Rules for setting the codes and names are provided below. These are based on the data model in Figure 2.

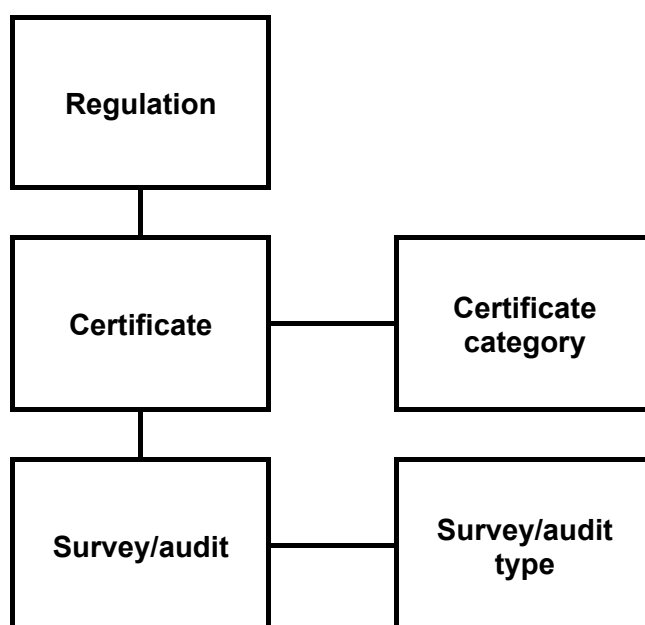


Figure 2: Data model

### 2.5.2 Classification societies

See Table A1. Name and code shall be as defined by each classification society.

### 2.5.3 IACS vessel types

See Table A2.

### 2.5.4 MMS vessel types

See Table A3.

### 2.5.5 Regulations and certificates

See Table A4 and A6.

Regulation name shall be as defined by the organization issuing the regulation.



# No. 75 (cont)

Regulation code shall be as defined by the organization issuing the regulation, or as an appropriate abbreviation of the name.

National regulation codes shall be prefixed by the country code, e.g. MHL-MR: Marshall Islands Maritime Regulations.

Certificate names shall be

- as defined in the corresponding regulation when such name definition is given
- as defined using the 'core name' in Table A4 when a name definition is not given, where terms defining the certificate category is filled into appropriate <> spaces
- defined in a similar manner to the names in Table A4 for regulations that are not listed

Certificate codes shall be

- as the corresponding regulation code when only one type of certificate is issued based on the regulation
- an appropriate abbreviation of the subject the certificate covers when more than one type of certificate is issued based on the regulation

## 2.5.6 Surveys and audits types

See Table A5.

The table differentiates between scheduled and non-scheduled surveys.

## 2.5.7 Surveys and audits

Survey and audit names shall be based on the 'core name' of the corresponding certificate given by Table A4 and A6, appended by the survey/audit type name plus 'survey' or 'audit'.

**Survey and audit codes shall be as the corresponding certificate code**

## 3. Technical Solution

Recognised Organisations should define, implement and manage a technical solution (technical protocol for data exchange) in accordance with established information security standards for access control, personnel data protection, fraud prevention, resistance to cyberattacks and resilience to man-made and natural disaster.

## 4. Change management and governance

### 4.1 REC 75 potential changes

REC\_75 may be subject to changes to reflect :

- Request for additional data from flag state(s)

# No. 75 (cont)

- Request for changes in format from flag state administration(s) or IACS Members societies
- Changes resulting from new or revised IACS Technical Resolutions or IMO Instruments, Resolutions and Circulars affecting the scope of REC 75 and impacting the content of data exchanged between recognized organizations and flag states
- Technology improvements enabling optimization of data format

## 4.2 REC 75 management of changes

REC 75 Editorial Board manages this change, under supervision of IACS GPG :

- REC 75 Editorial Board is chaired by IACS EG-Data Chairman and composed of voluntary members of EG-Data
- IACS EG-Data Chairman organizes REC 75 Editorial Board web conferences twice a year, or at ad-hoc request of REC 75 Editorial Board member
- REC 75 Editorial Board web conferences agenda shall be :
  - o To discuss feedbacks on the implementation of REC 75
  - o To review specific requests for changes and / or changes requested as resulting from new regulatory or technical inputs
  - o To establish dedicated work group when required for a specific topic
- Requests resulting in the change of main Chapters 1 to 4 of REC 75 and / or in the change of the format of the data exchanged (addition of data, change in data model), once approved by Editorial Board will be :
  - o Submitted by EG-Data Chair to all EG-Data members, for agreement
  - o If approved, submitted by EG-Data Chair to GPG for approval
  - o If approved by GPG, a revision of REC 75 shall be published with new version number (RevX+1)
- Requests not resulting in the change in the main Chapters 1 to 4 of REC 75 nor in any change in the format of the data exchange (this would be limited to changes in list of values displayed in Appendixes to REC 75), once approved by Editorial Board will be :
  - o Submitted by EG-Data Chair to all EG-Data members, for agreement
  - o If agreed by the EG-Data, submitted by EG-Data Chair to GPG for information and a new version of the Appendixes shall be published (RevX.Y+1)

# No. 75

(cont)

## APPENDIX

<b>Table A1 - Classification societies</b>	
<b>Code</b>	<b>Name</b>
ABS	American Bureau of Shipping
BV	Bureau Veritas
CCS	China Classification Society
CRS	Croatian Register of Shipping
IRS	Indian Register of Shipping
KR	Korean Register
LR	Lloyd's Register of Shipping
NK	Nippon Kaiji Kyokai
PRS	Polish Register of Shipping
RINA	RINA Services S.p.A.
RS	Russian Maritime Register of Shipping
VL	DNV GL
Non-IACS member ROs may use other codes.	

<b>Table A2 - IACS vessel types</b>	
<b>Code</b>	<b>Name</b>
BC	Bulk carrier (all combinations OB, OBO, OO)
CT	Chemical tanker
GC	General cargo vessel (including ro-ro cargo, container, reefer, HSC cargo)
GT	Gas tanker
LC	Other bulk liquid carrier
OT	Oil tanker
PS	Passenger vessel (including Passenger/General cargo, Passenger/ro-ro, Passenger HSC)
ZZ	Other vessel type

**No.  
75**  
(cont)

<b>Table A3 - MMS vessel types</b>	
<b>Code</b>	<b>Name</b>
BC	Bulk carrier
CH	Cargo high speed craft
CT	Chemical tanker
GC	Gas carrier
MO	Mobile offshore drilling unit
OC	Other cargo ship
OT	Oil tanker
PH	Passenger high speed craft
PS	Passenger ship
PR	Passenger ferry (ro-ro)

Table A4 - Regulations and certificates					
Regulation (for reference)			Certificate		
Code	Name	Annex / Regulation	Code	Core name	Applicable for
AFS	International Convention on the Control of Harmful Anti-Fouling Systems on Ships		AFS	<> Anti-Fouling System <>	Vessel
BWM	International Convention for the Control and Management of Ships' Ballast Water and Sediments		BWM	<> Ballast Water Management <>	Vessel
CL	Class Rules		CL	Classification <>	Vessel
DSC	Code of Safety for Dynamically Supported Craft		DSC	Dynamically Supported Craft Construction and Equipment <>	Vessel
EU-MRV*	Regulation (EU) 2015/757 of the European Parliament and of the Council of 29 April 2015 on the monitoring, reporting and verification of carbon dioxide emissions from maritime transport.		EU-MRV*	Monitoring, reporting, and verification of carbon dioxide emissions <>	Vessel
HSC	International Code of Safety for High-Speed Craft		HSC	<> High-Speed Craft Safety <>	Vessel
IBC	International Code for the Construction and Equipment of Ships Carrying Dangerous Chemicals in Bulk		IBC	<> of Fitness for the Carriage of Dangerous Chemicals in Bulk	Vessel
IGC	International Code for the Construction and Equipment of Ships Carrying Liquefied Gases in Bulk		IGC	<> of Fitness for the Carriage of Liquefied Gases in Bulk	Vessel
ILO92*	Accommodation of Crews Convention		ILO92*	ILO92 <> - Crew Accommodation	Vessel
ILO133*	Accommodation of Crews (Supplementary Provisions) Convention		ILO133*	ILO133 <> - Crew Accommodation	Vessel
ILO152	Convention concerning Occupational Safety and Health in Dock Work		ILO152	ILO152 <> - Cargo Gear	Vessel

**No.  
75**  
(cont)

Regulation			Certificate		
Code	Name	Annex / Regulation	Code	Core name	Applicable for
INF	International Code for the Safe Carriage of Packaged Irradiated Nuclear Fuel, Plutonium and High-Level Radioactive Wastes on Board Ships		INF	<> of Fitness for the Carriage of INF Cargo	Vessel
ISM	International Safety Management Code		DOC	<> Safety Management <>, Company	Company
			SMC	<> Safety Management <>, Vessel	Vessel
ISPS	International Ship and Port Facility Security Code		ISPS	<> Ship Security <>	Vessel
ISO9001*	Quality management systems		ISO9001*	Quality management system <>	Company
ISO14001*	Environmental management systems		ISO14001*	Environmental management system <>	Company
ISO45001*	Occupational health and safety management systems		ISO45001*	Occupational health and safety management system <>	Company
ISO50001*	Energy management systems		ISO50001*	Energy management system <>	Company
LL	International Convention on Load Lines		LL	<> Load Line <>	Vessel
MARPOL	International Convention for the Prevention of Pollution from Ships	Annex I	OPP	<> Oil Pollution Prevention <>	Vessel
		Annex II	NLS	<> Pollution Prevention <> for the Carriage of Noxious Liquid Substances in Bulk	Vessel
		Annex IV	SPP	<> Sewage Pollution Prevention <>	Vessel
		Annex V	GPP	<> Garbage Pollution Prevention <>	Vessel
		Annex VI	APP	<> Air Pollution Prevention <>	Vessel
			EE	<> Energy Efficiency <>	Vessel
	FDCS	<> Fuel Oil Consumption Reporting <>	Vessel		
MLC	Maritime Labour Convention		MLC	Maritime Labour <>	Vessel
MODU	Code for the Construction and Equipment of Mobile Offshore Drilling Units		MODU	Mobile Offshore Drilling Unit Safety <>	Vessel
POLAR	International Code for Ships Operating in Polar Waters		POLAR	Polar Ship <>	Vessel

**No.  
75**  
(cont)

Regulation			Certificate		
Code	Name	Annex / Regulation	Code	Core name	Applicable for
SOLAS	International Convention for the Safety of Life at Sea		CSS	Cargo Ship Safety <>	Vessel
		Reg. II-2/19	DG	<> for the Carriage of Dangerous Goods	Vessel
			SC	Cargo Ship Safety Construction <>	Vessel
			SE	Cargo Ship Safety Equipment <>	Vessel
			SR	Cargo Ship Safety Radio <>	Vessel
			PSS	Passenger Ship Safety <>	Vessel
SPS	Code of Safety for Special Purpose Ships		SPS	Special Purpose Ship Safety <>	Vessel
TM	International Convention on Tonnage Measurements of Ships		TM	<> Tonnage <>	Vessel
			OTHER	<>	Vessel

“\*” : inclusion of data related to EU-MRV regulation, ISO standards, ILO92 and ILO133 conventions is not mandatory ; each RO may define if this data is to be included or not (based on the scope of work of the RO and the agreement between the RO and the Flag State)

**No.  
75**  
(cont)

<b>Table A5 - Survey and audit types</b>		
<b>Code</b>	<b>Name</b>	<b>Scheduling</b>
A	Annual	Scheduled
F	Final	Un-scheduled
I	Initial	Un-scheduled
In	Intermediate	Scheduled
It	Interim	Un-scheduled
O	Occasional	Un-scheduled
R	Renewal	Scheduled

<b>Table A6 - Class Surveys</b>	
<b>Code</b>	<b>Description</b>
B	Inspection of the outside of the ship's bottom (dry)
W	Inspection of the outside of the ship's bottom (iws)
Tx	Tailshaft (x to enable to code several tailshafts T1, T2, etc)
Box	Boiler (x to enable to code several boilers Bo1, Bo2, etc)
BOT	Bottom surveys
For other class surveys, use the coding of the ship's recognised organization	

End of  
Document